

**Figure 1: Imiak Hill Conduit Complex (HICC)**

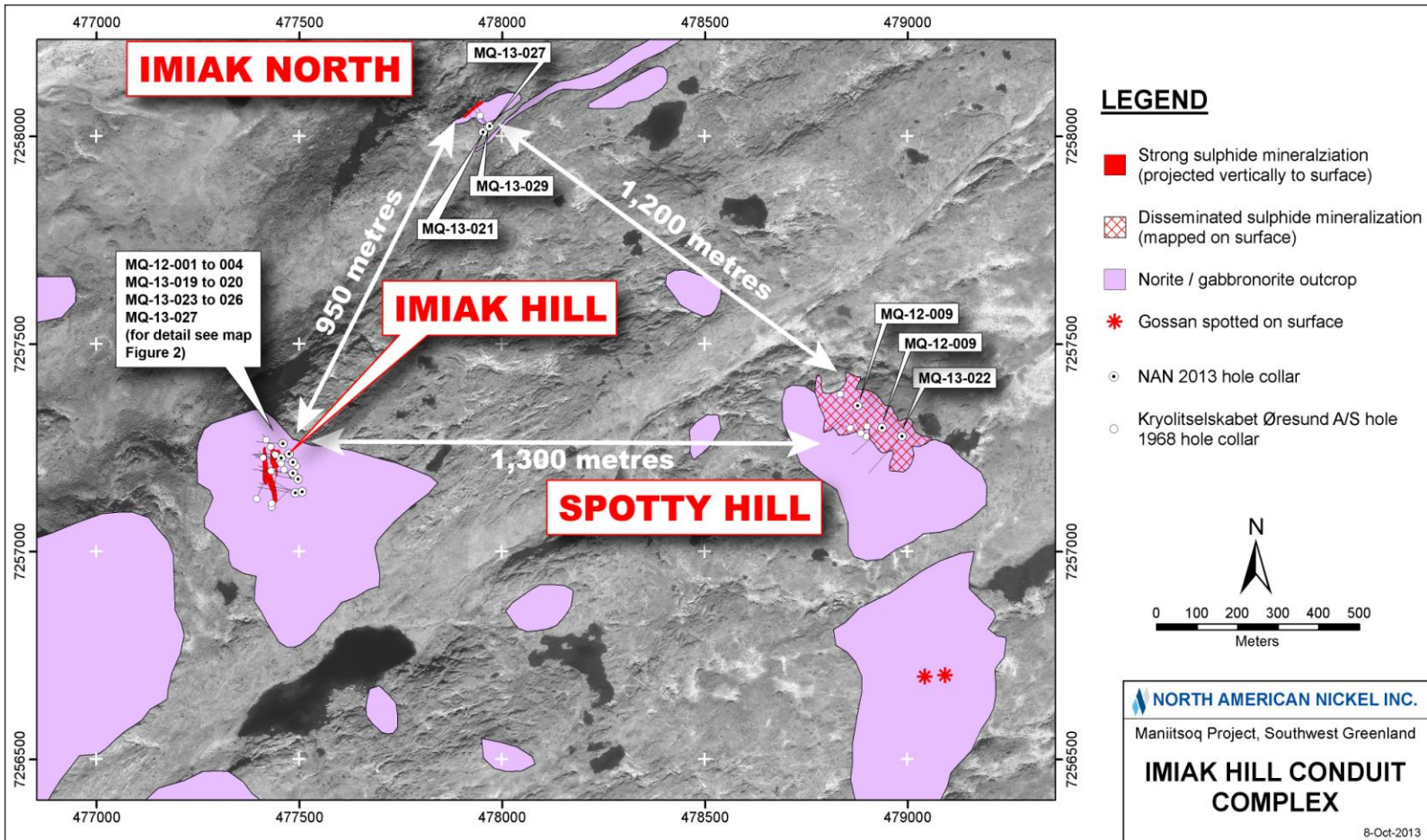


Figure 2: Imiak Hill Drill Plan

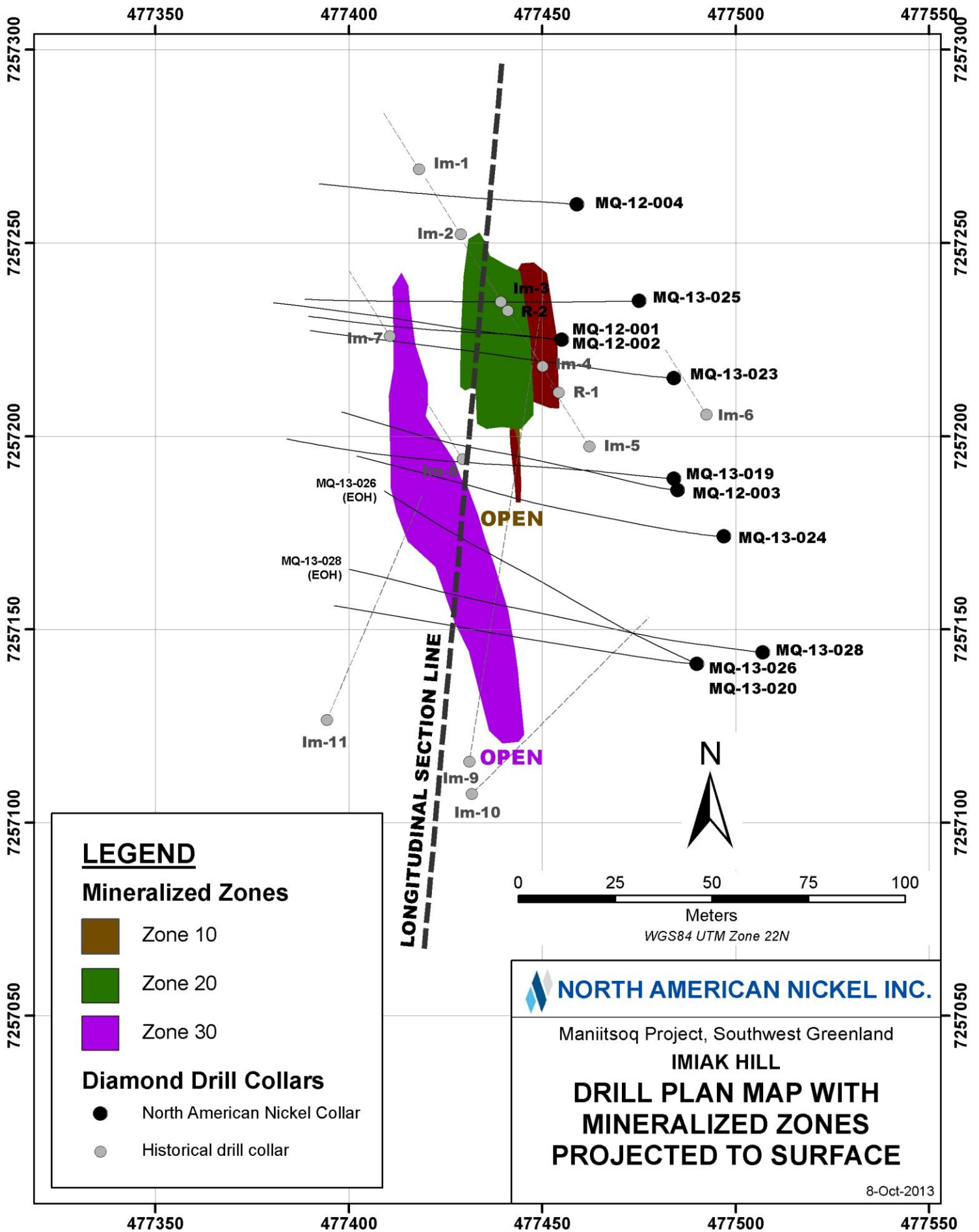


Figure 3: Imiak Long Section 2013

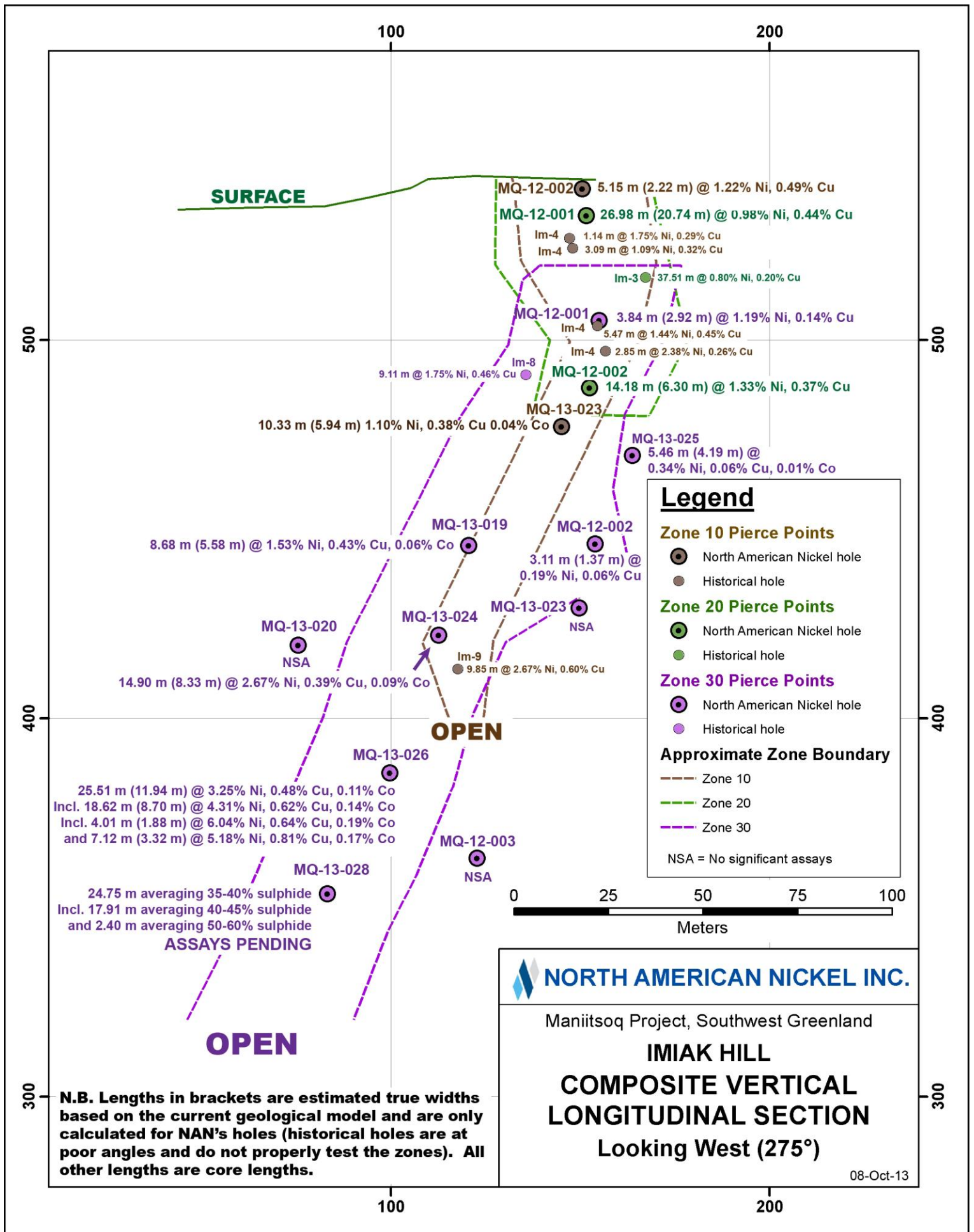
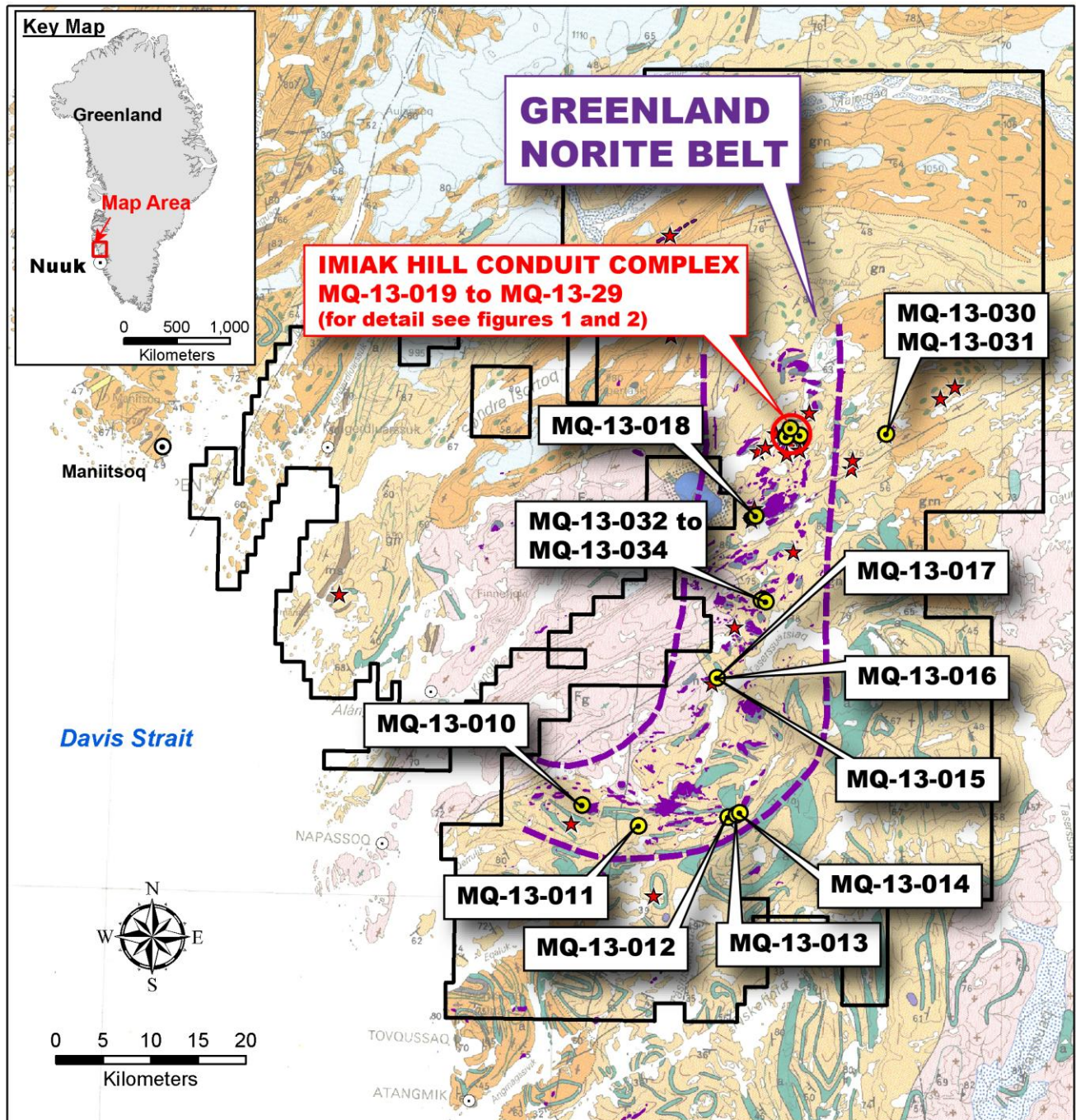


Figure 4: Drill Hole Location Map

## MANIITSOQ PROJECT, SOUTHWEST GREENLAND GEOLOGY & DIAMOND DRILL HOLE LOCATION MAP\*



### PROPERTY

- NAN existing mineral exploration licences (2011/54 & 2012/28)

### MINERALIZATION

- ★ Ni sulphide occurrence

### NAN DIAMOND DRILL HOLES

- 2012 hole collar (9 holes, 1,551 m)
- 2013 collar (25 holes, 4,266 m)

### GEOLOGY\*

#### Recent

- Ice
- Mesozoic**
- Carbonatite

#### Archean

- Ni ± Cu ± Co ± PGE showing
- Noritic intrusion
- Granite / granodiorite gneiss
- Gneiss - mainly enderbitic
- Gneiss - mainly TTG
- Amphibolite

\* After Geological Map of Greenland series map sheet 2, 1989

\*\* After Jensen et al., 2004