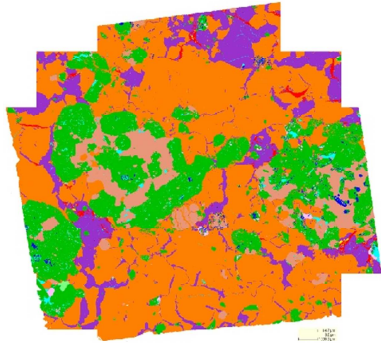


QEMSCAN FIELD STITCH IMAGES

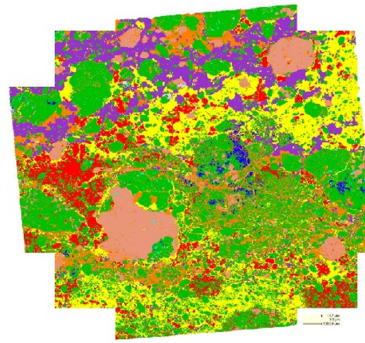
Sample L163163
DDH: MQ-12-001
Imiak Hill



Mineral Mass (%)

Mineral	Mass %
Pentlandite	14.7
Chalcopyrite	0.09
Pyrrhotite	57.7
Pyrite	1.15
Quartz	0.37
Feldspars	5.40
Clinopyroxene	19.2
Orthopyroxene	0.63
Biotite/Phlogopite	0.01
Other Silicates	0.05
Carbonates	0.72
Apatite	0.06
Other	0.01

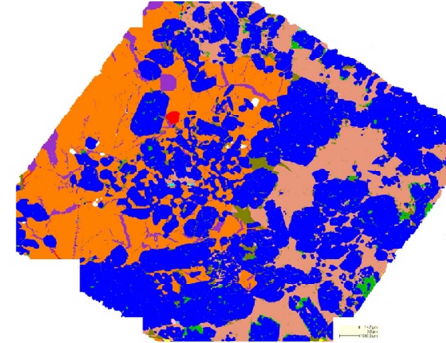
Sample L163164
DDH: MQ-12-001
Imiak Hill



Mineral Mass (%)

Mineral	Mass %
Pentlandite	12.9
Chalcopyrite	21.7
Pyrrhotite	13.5
Pyrite	12.9
Quartz	0.13
Feldspars	6.68
Clinopyroxene	30.6
Orthopyroxene	1.00
Biotite/Phlogopite	0.28
Other Silicates	0.07
Carbonates	0.27
Apatite	0.01
Other	0.00

Sample L163593
DDH: MQ-12-005
Spotty Hill



Mineral Mass (%)

Mineral	Mass %
Pentlandite	3.02
Chalcopyrite	0.12
Pyrrhotite	28.4
Pyrite	0.27
Quartz	0.04
Feldspars	10.7
Clinopyroxene	1.11
Orthopyroxene	53.9
Biotite/Phlogopite	2.32
Other Silicates	0.05
Carbonates	0.05
Apatite	0.01
Other	0.01

Colour Legend



SCALE (All Images)

1 cm